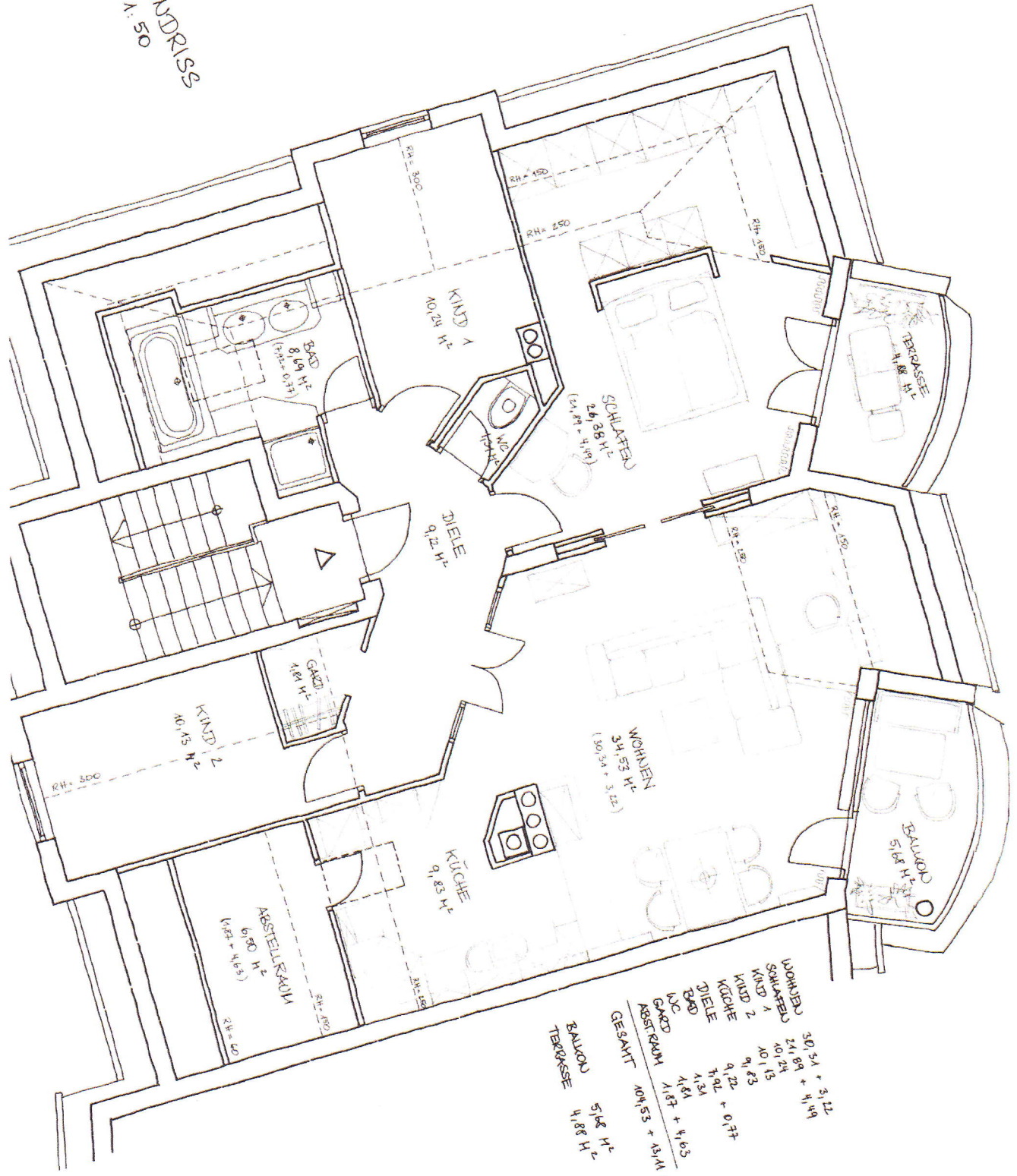


GRUNDRISS  
M 1:50



|           |                         |
|-----------|-------------------------|
| WOHNEN    | 30,54 + 3,12            |
| SCHLAFEN  | 24,84 + 4,49            |
| KIND 1    | 10,24                   |
| KIND 2    | 10,15                   |
| KÜCHE     | 9,83                    |
| DIELE     | 9,22 + 0,77             |
| BAD       | 7,92                    |
| BAD       | 4,34                    |
| BALKON    | 4,84                    |
| ABSTURZM. | 1,87 + 4,65             |
| GESAMT    | 101,53 + 13,41 = 114,94 |
| BALKON    | 5,98 H <sup>2</sup>     |
| TERRASSE  | 4,88 H <sup>2</sup>     |